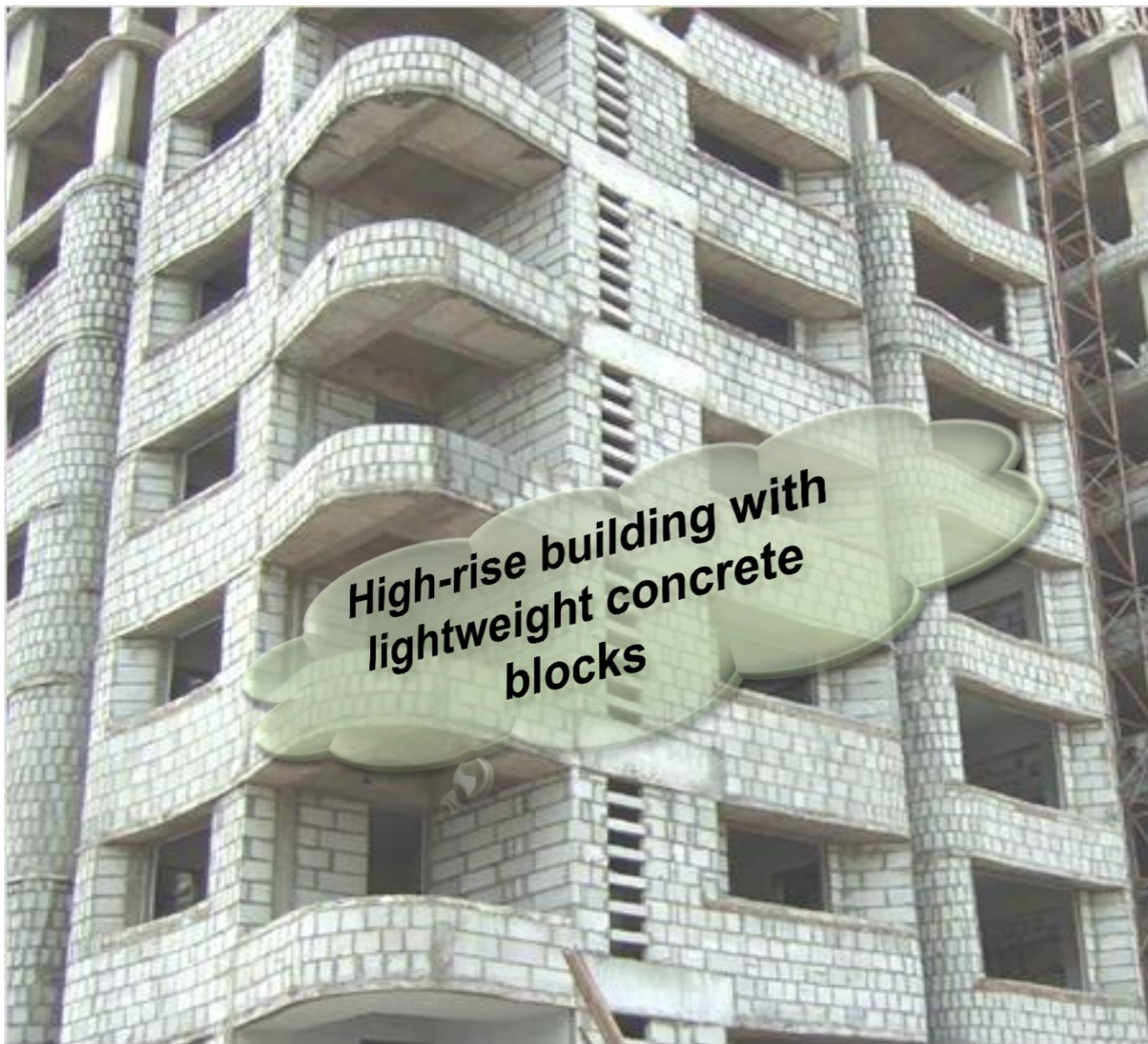
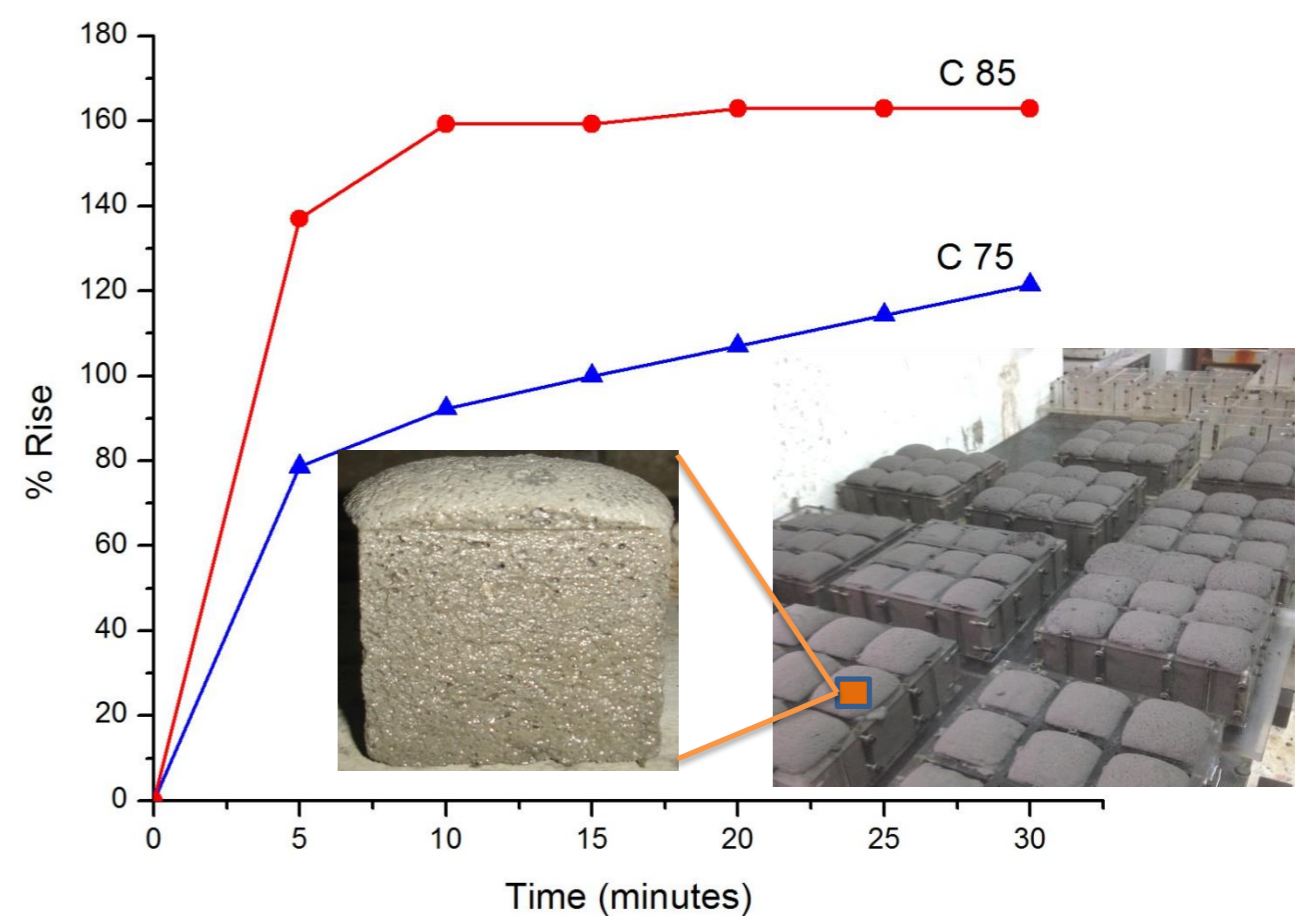


Developing lightweight concrete (LWC) systems using sustainable materials and technology

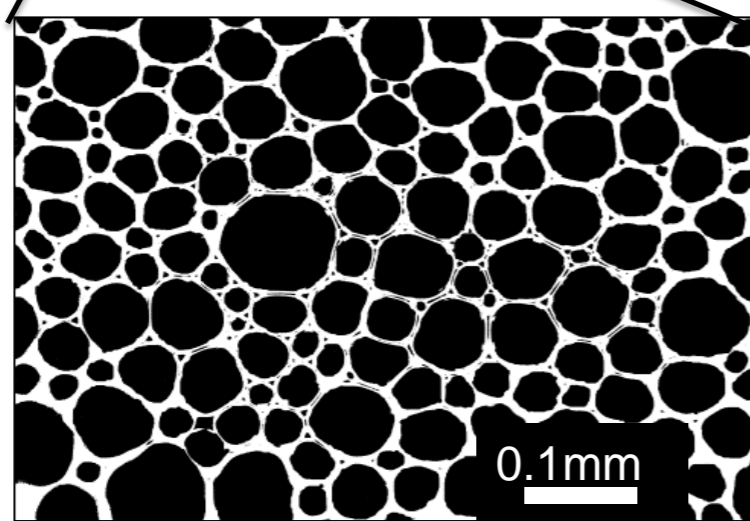
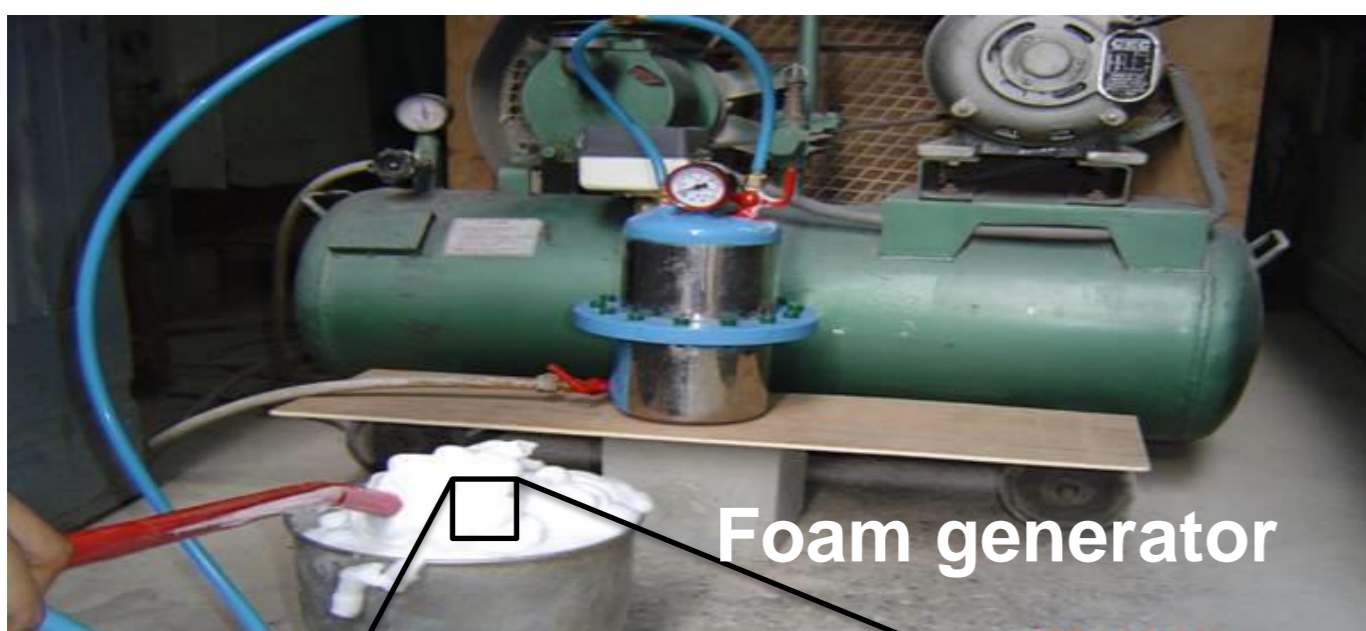


Factors to be considered for designing LWC

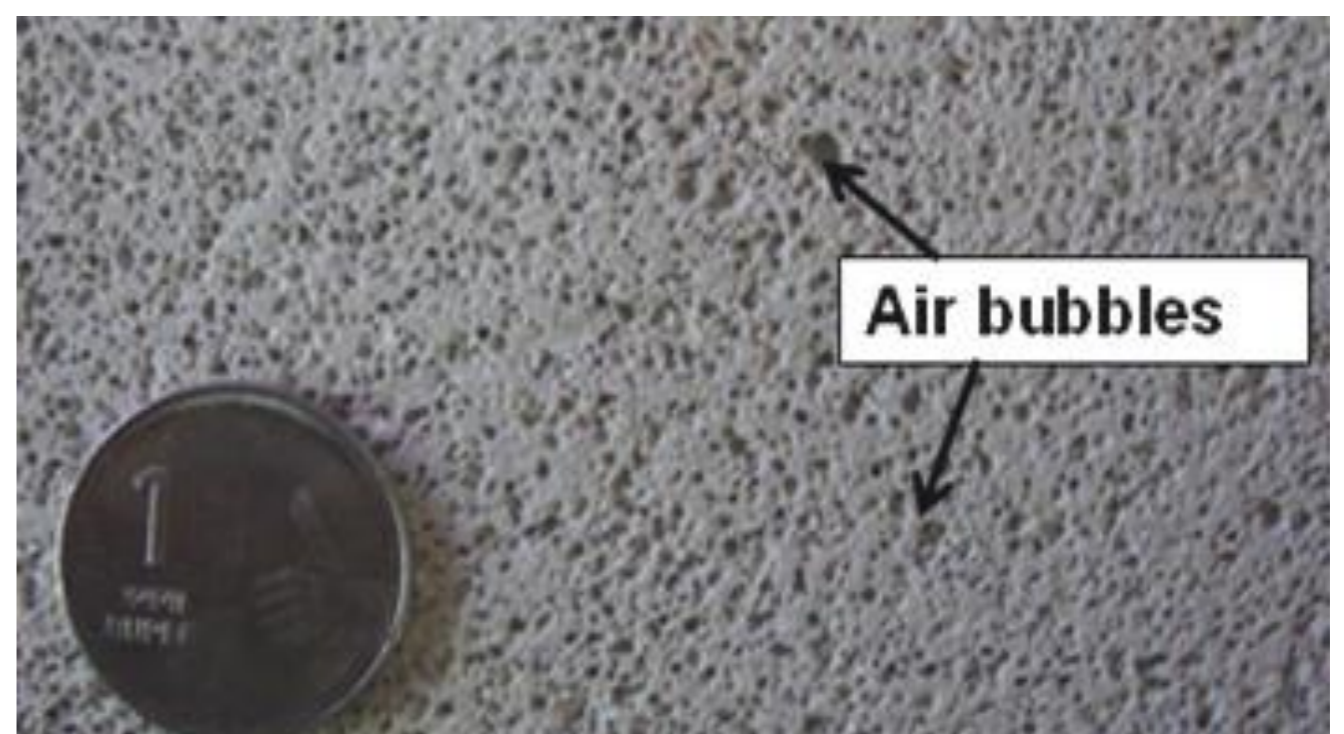
- Fineness of aerating agent
- Type of cement
- Aggregate gradation
- Mixing procedure
- Temperature effects



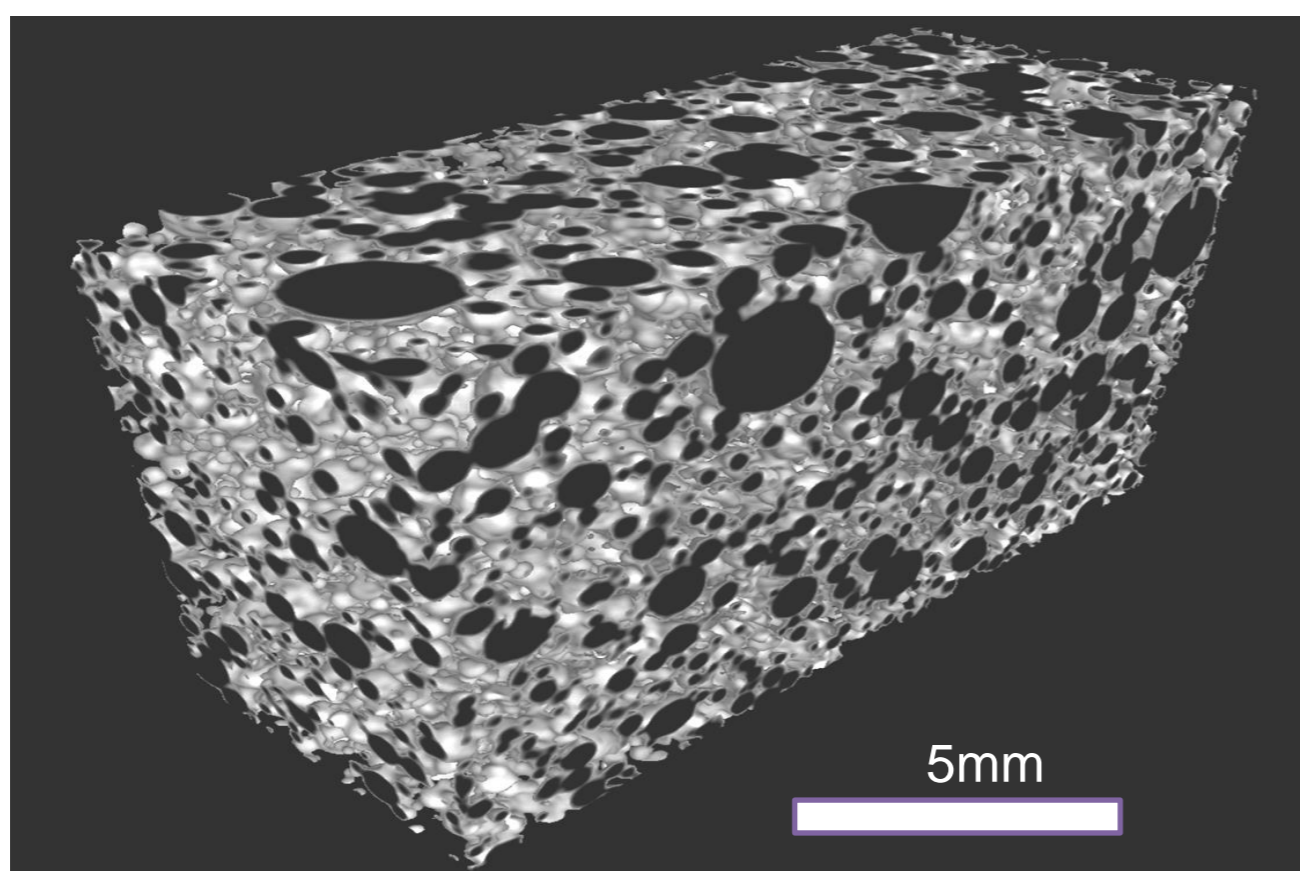
Effect of fineness of aluminium powder in aeration



Foam bubble distribution



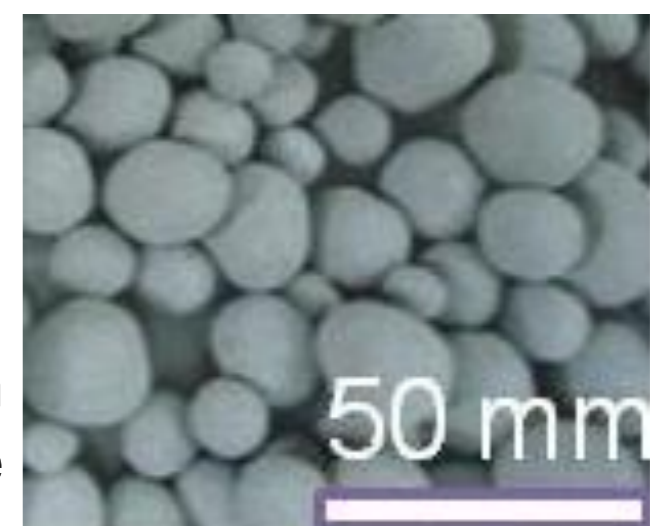
Pore size distribution in aerated concrete



X-ray tomography image of pores in foam concrete



Sintered fly ash aggregate



Cold-bonded fly ash aggregate