

Understanding the physico-chemical behaviour of cement based materials using micro-analytical studies



Scanning Electron Microscope (SEM)

Laboratory for micro-analytical and characterization of civil engineering materials (MAC-CEM Lab)

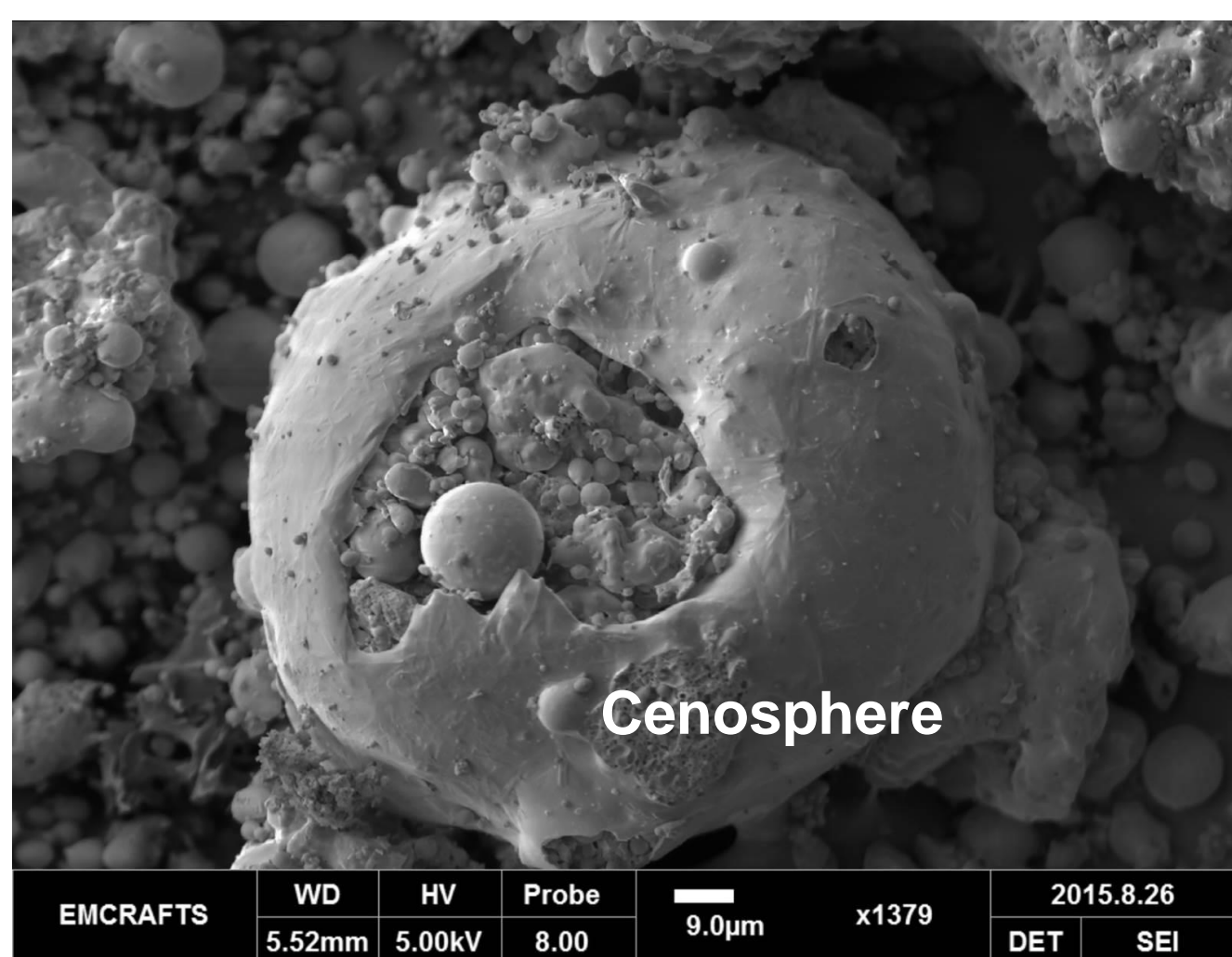


Optical Microscopes

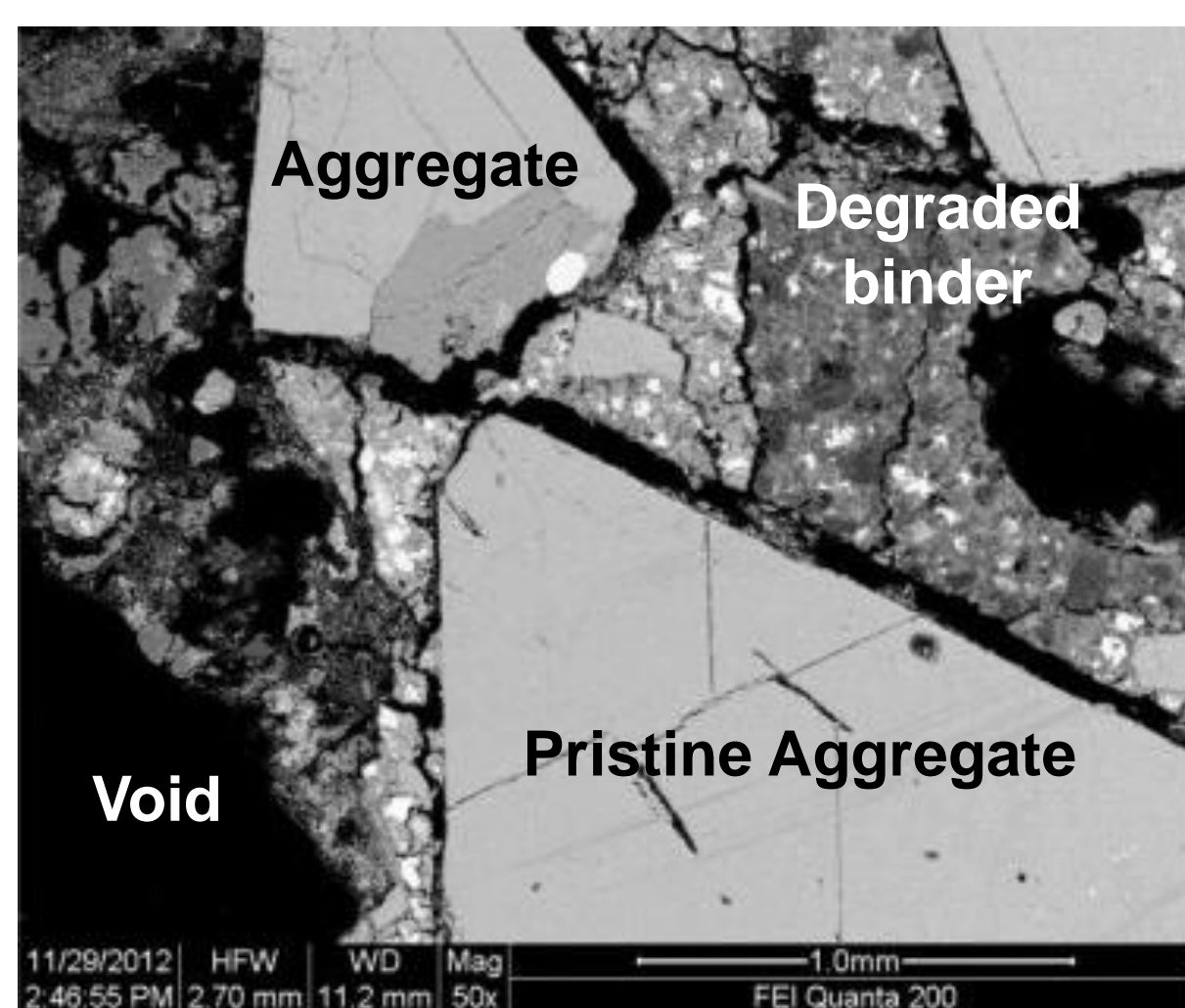


Polishing Machine with Epoxy Impregnation

Microscopic image analysis for understanding material behaviour and degradation



Morphology of Class F fly ash

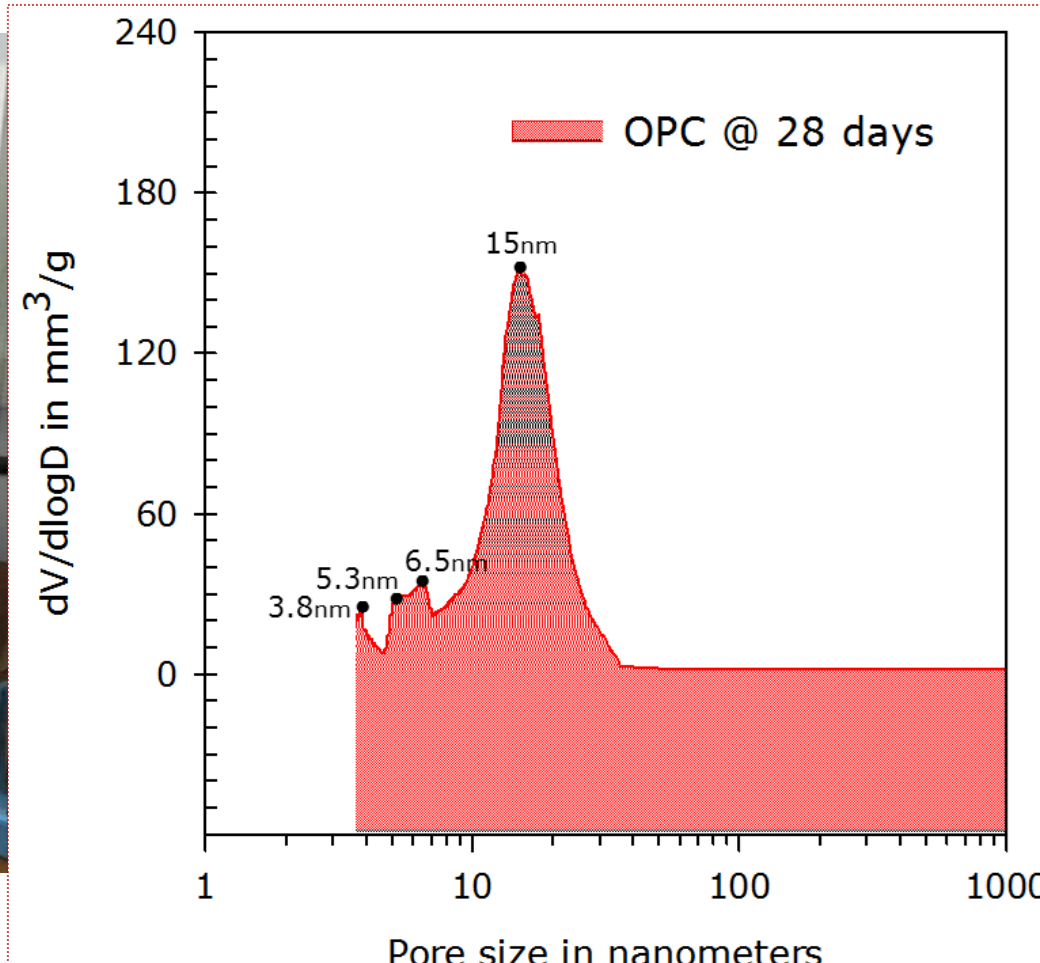


Microstructure showing degradation of cement mortar due to liquid sodium exposure

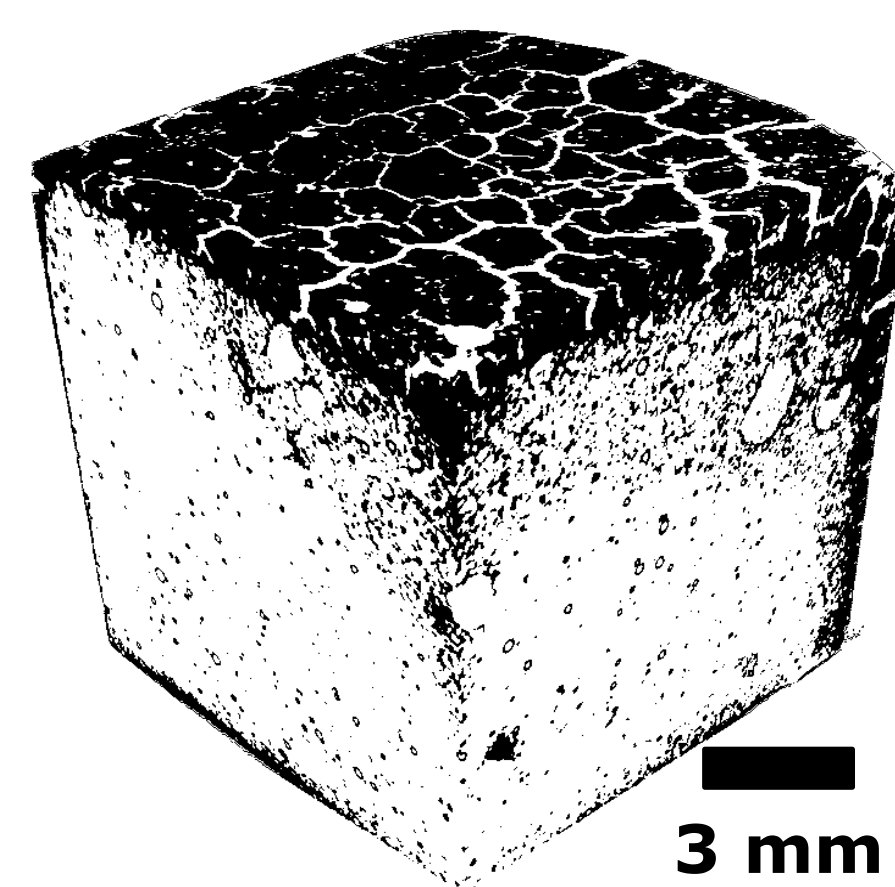
Pore structure analysis



Mercury Intrusion Porosimeter



X-ray Tomography



Degradation of cement paste due to exposure to nitric acid